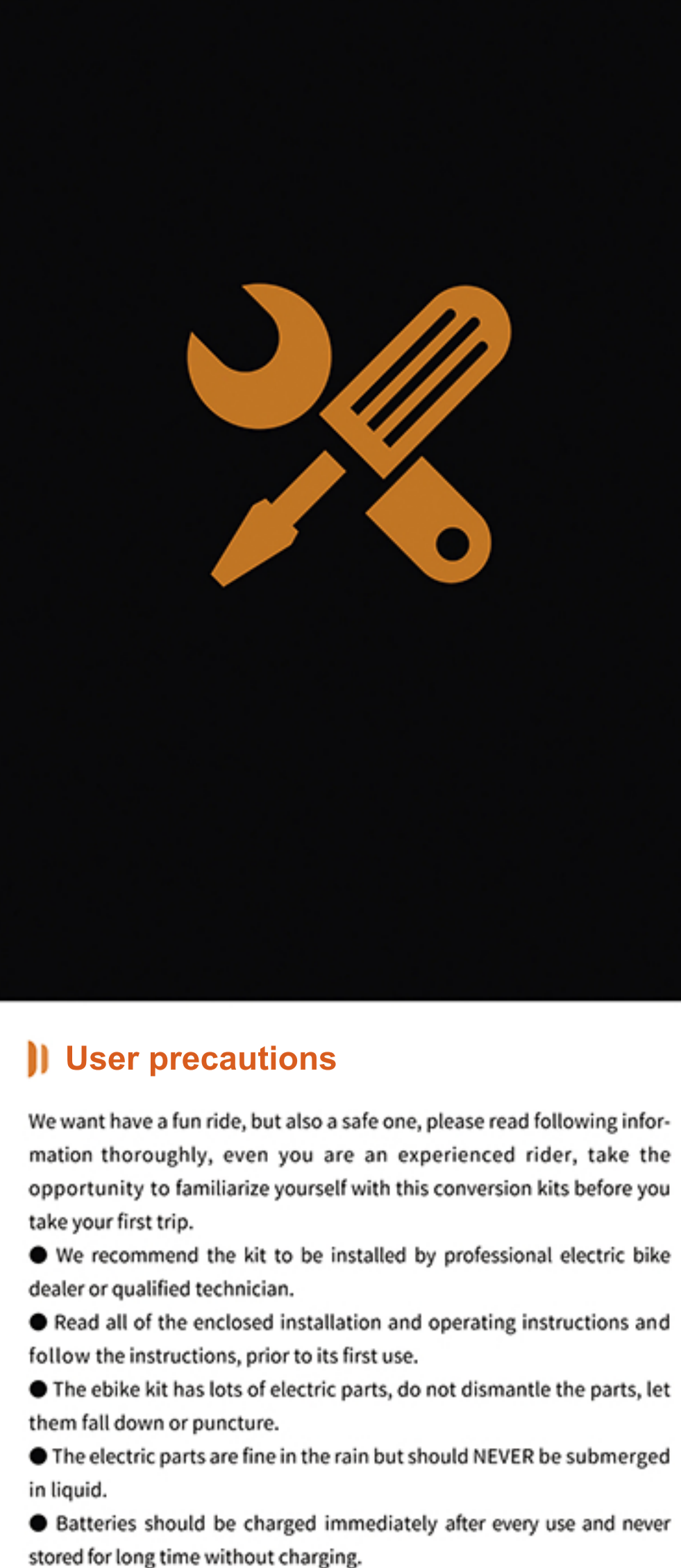


Electric Bike Conversion Kit Manual

Please make sure that you have a full understanding of this instruction manual before getting started .



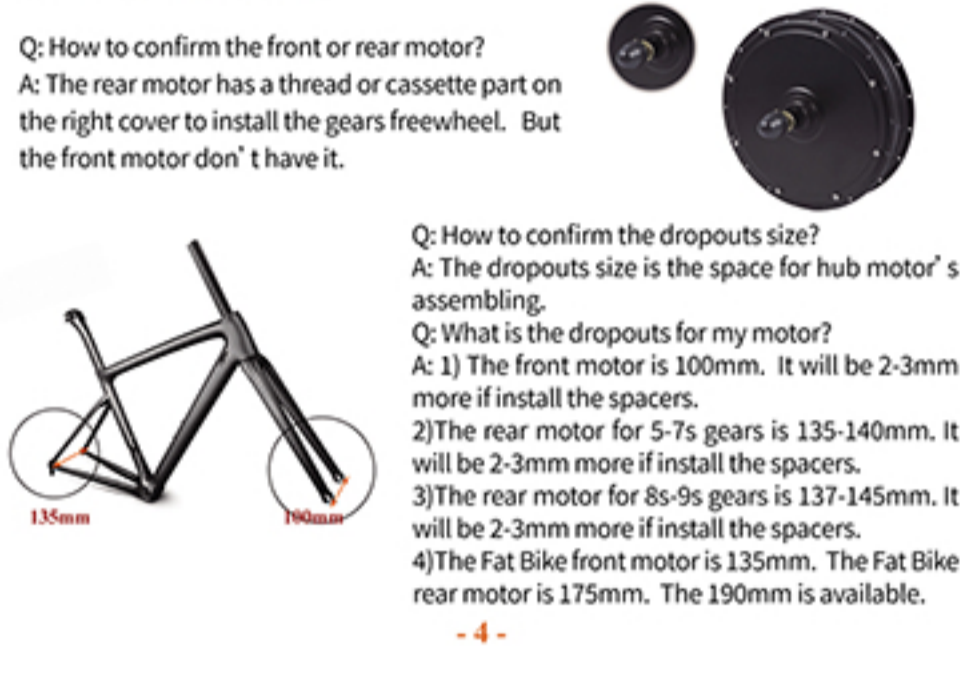
Contents

User precaution.....	Page1
Essential parts.....	Page2
Display meter Installation.....	Page5
How to install.....	Page5
Disc brake Installation.....	Page5
Gear Installation.....	Page6
Rear drive Motor wheel Installation.....	Page7
Front drive Motor wheel Installation.....	Page8
Controller Installation.....	Page10
PAS Installation.....	Page12
PAS and Bottom Bracket Choose.....	Page16
Controller's wire diagram.....	Page17
Display meter Installation.....	Page20

Essential parts



What you may also have



Basic tools



What you need to know

Q: How to confirm the wheel size correct?
 A: Check your tire's model. Such as 26"1.95 means it is 26inch. 700'35 means it is 700C wheel.

Q: How to confirm the front or rear motor?
 A: The rear motor has a thread or cassette part on the right cover to install the gears/freewheel. But the front motor don't have it.

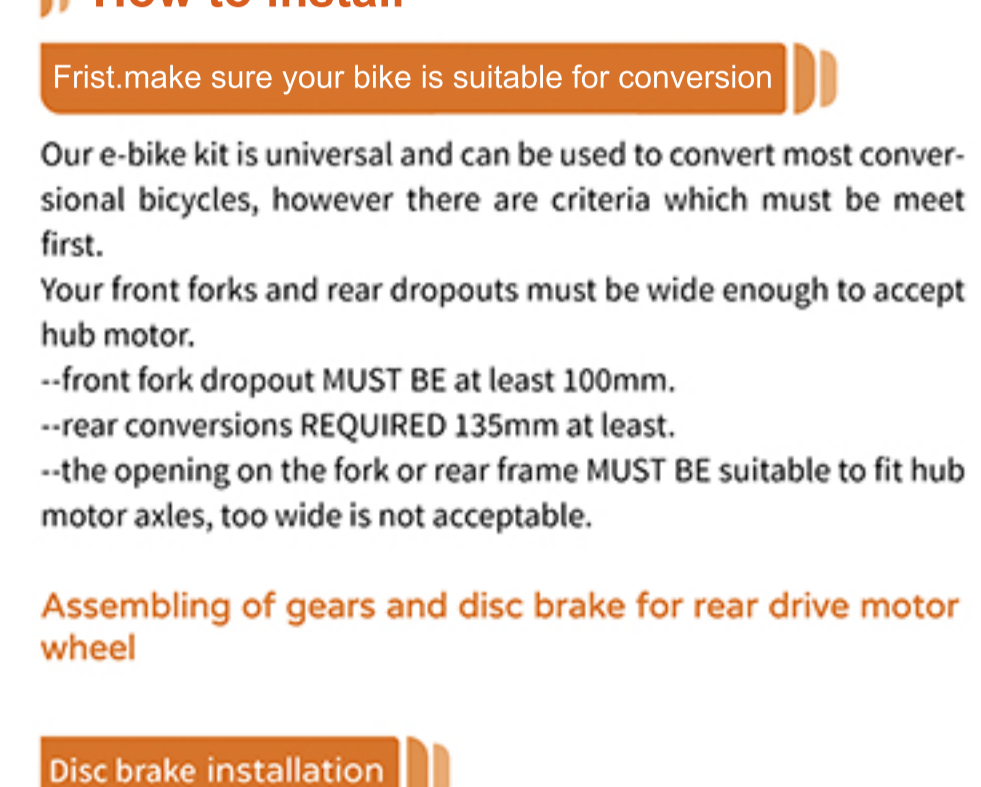
Q: How to confirm the dropouts size?
 A: The dropouts size is the space for hub motor's assembling.

Q: What is the dropouts for my motor?
 A: 1) The front motor is 100mm. It will be 2-3mm more if install the spacers.
 2) The rear motor for 5-7s gears is 135-140mm. It will be 2-3mm more if install the spacers.
 3) The rear motor for 8s-9s gears is 137-145mm. It will be 2-3mm more if install the spacers.
 4) The Fat Bike front motor is 135mm. The Fat Bike rear motor is 175mm. The 190mm is available.

User precautions

- We want to have a fun ride, but also a safe one, please read following information thoroughly, even you are an experienced rider, take the opportunity to familiarize yourself with this conversion kits before you take your first trip.
- We recommend the kit to be installed by professional electric bike dealer or qualified technician.
- Read all of the enclosed installation and operating instructions and follow the instructions, prior to its first use.
- The e-bike kit has lots of electric parts, do not dismantle the parts, let them fall down or puncture.
- The electric parts are fine in the rain but should NEVER be submerged in liquid.
- Batteries should be charged immediately after every use and never stored for long time without charging.
- The bike should be checked carefully after long time ride.
- Watch out other new riders while have a riding test.
- Make sure the tires have proper pressure before riding.
- Make sure the brakes are operating properly before riding.
- Always wear a helmet when riding an electric bicycle for your own safety, it is law in some areas.
- Do not use a mobile phone or other electronic devices while riding an electric bicycle; it is imperative that you pay attention to traffic.
- If possible, ride in all bike lanes and always in correct direction of traffic.
- Adhere to all valid traffic regulations.
- Keep in mind that other traffic participants may underestimate the speed of an electric bicycle.
- Ride with both hands on the handlebars when riding your electric bicycle.
- Ride as defensively as soon as possible.

Optional parts



Different types of lithium batteries



How to install

Frist, make sure your bike is suitable for conversion

Our e-bike kit is universal and can be used to convert most conventional bicycles, however there are criteria which must be met first.

Your front forks and rear dropouts must be wide enough to accept hub motor.

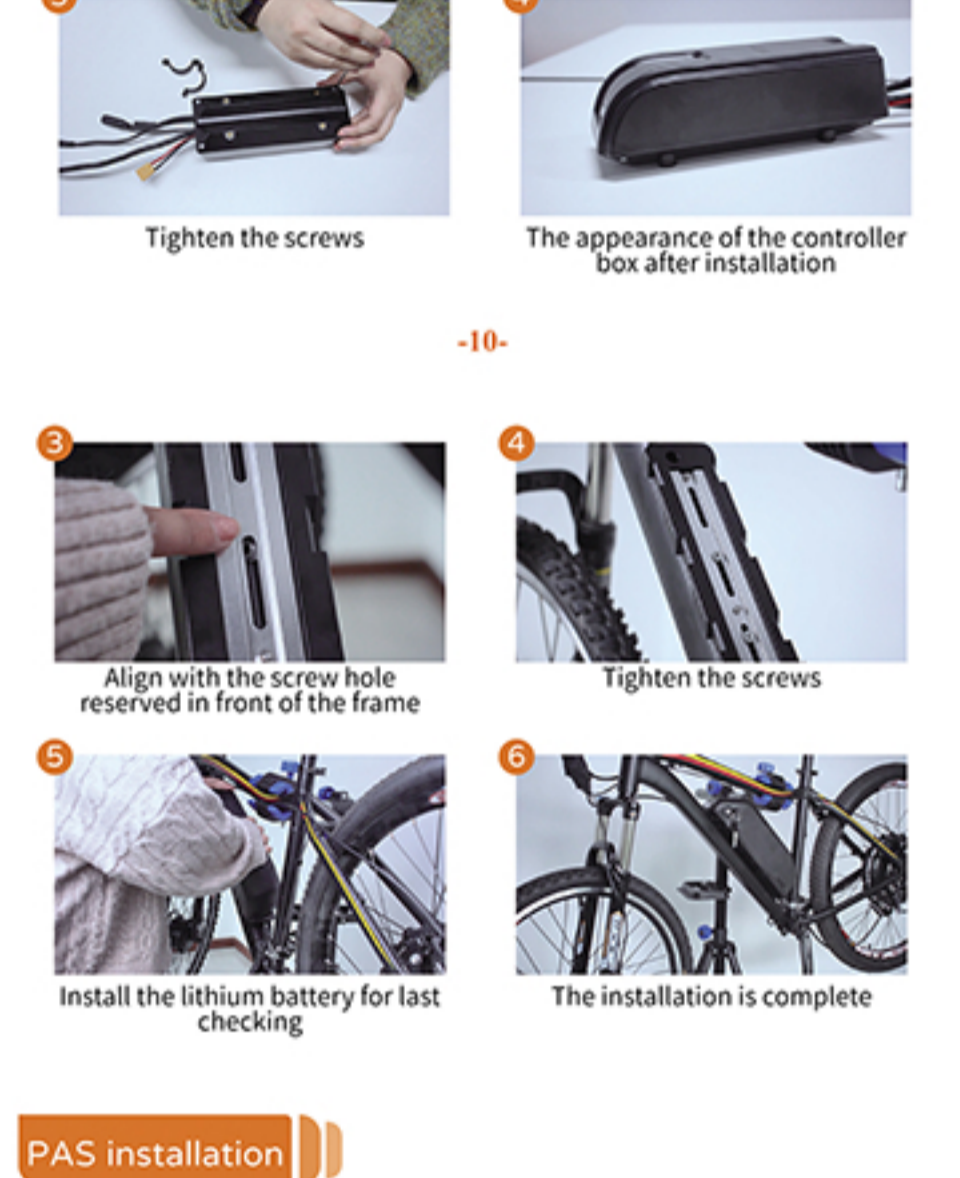
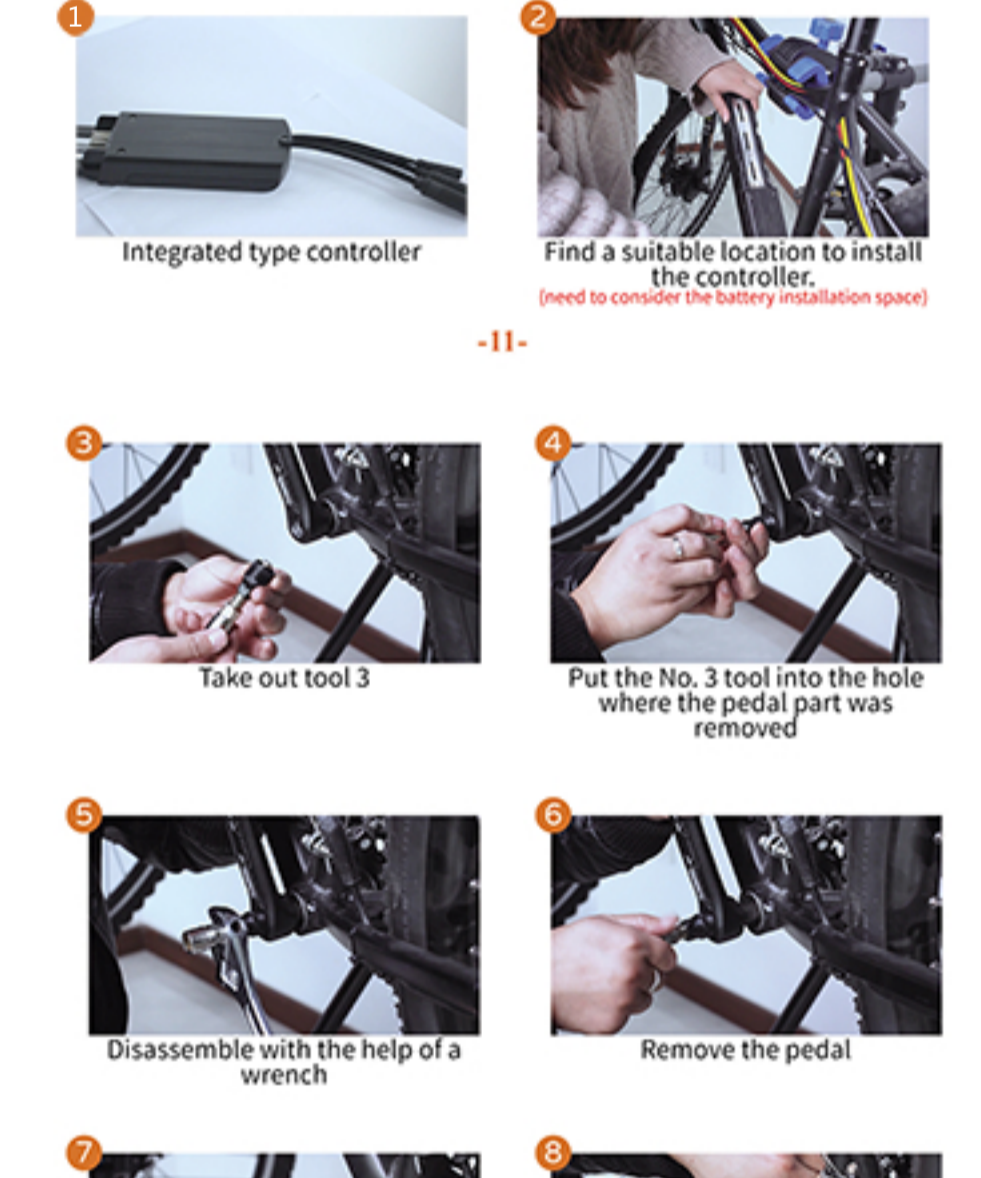
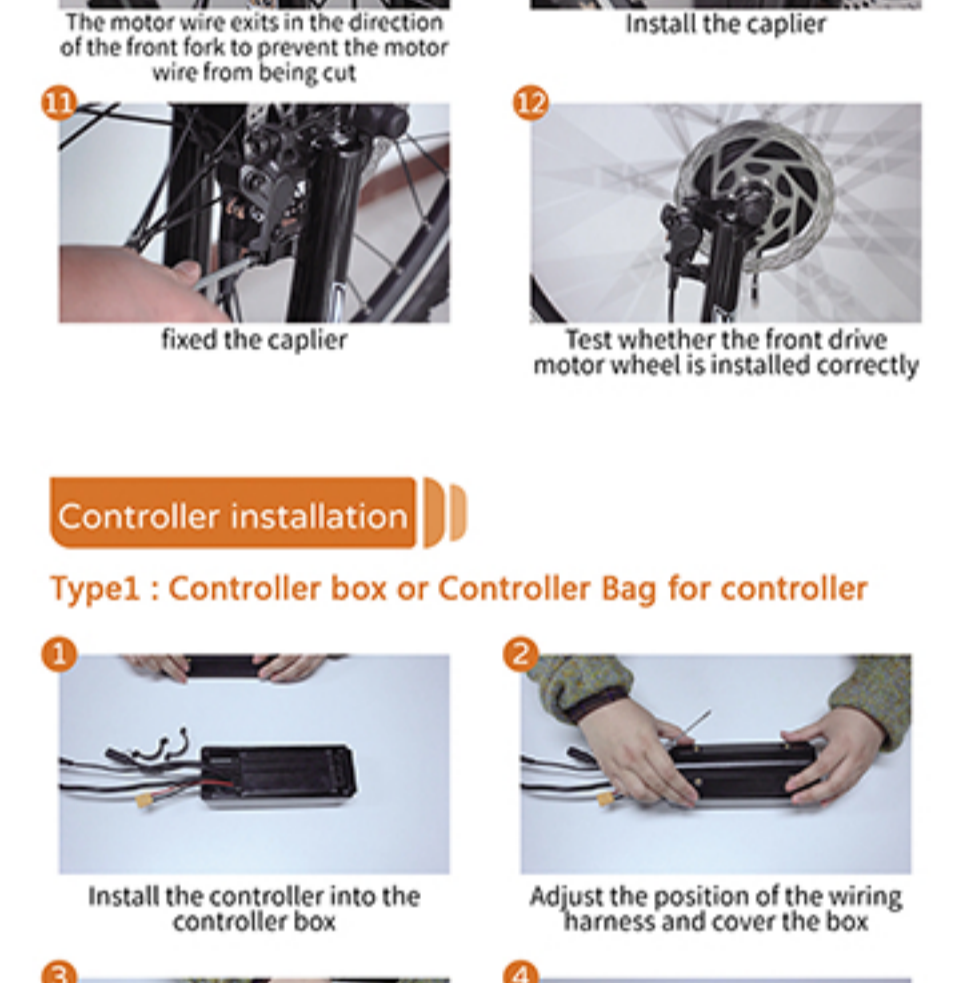
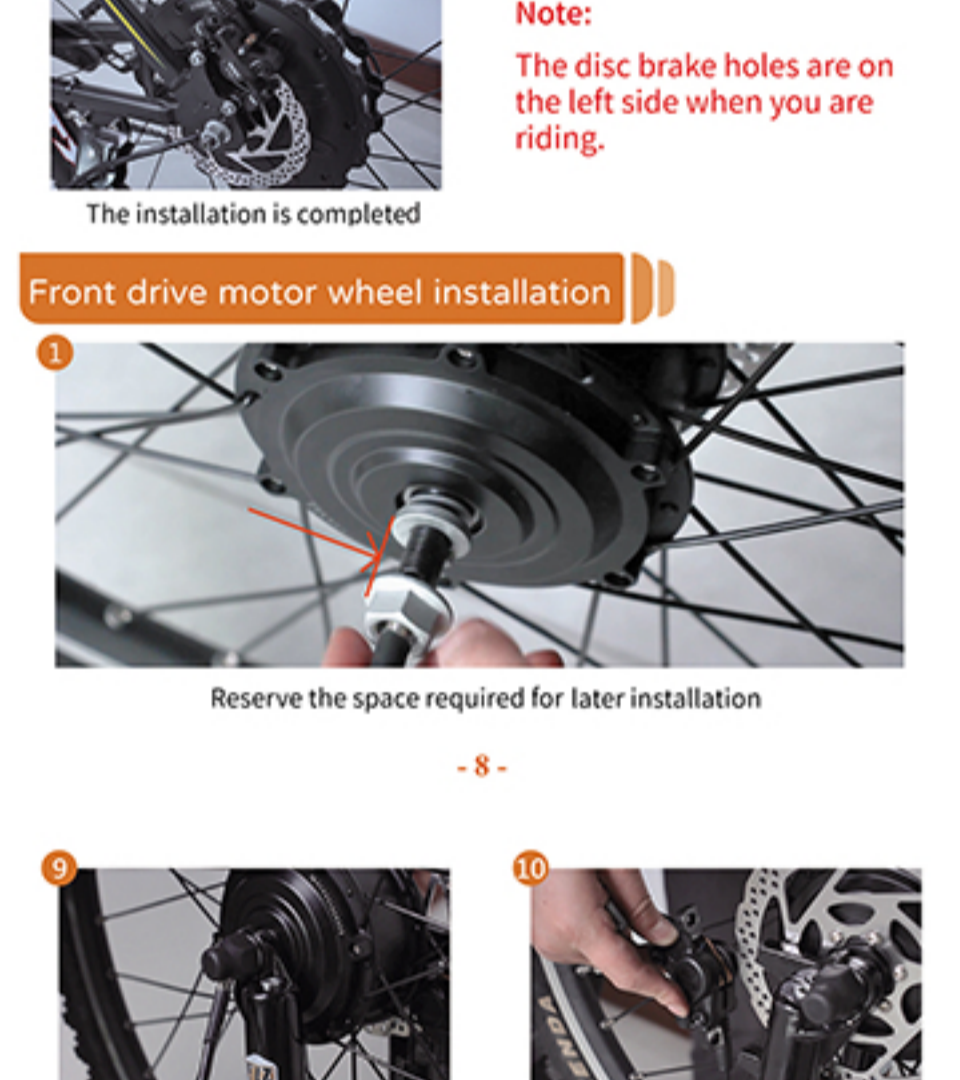
--front fork dropout MUST BE at least 100mm.
 --rear conversions REQUIRED 135mm at least.
 --the opening on the fork or rear frame MUST BE suitable to fit hub motor axles, too wide is not acceptable.

Assembling of gears and disc brake for rear drive motor wheel

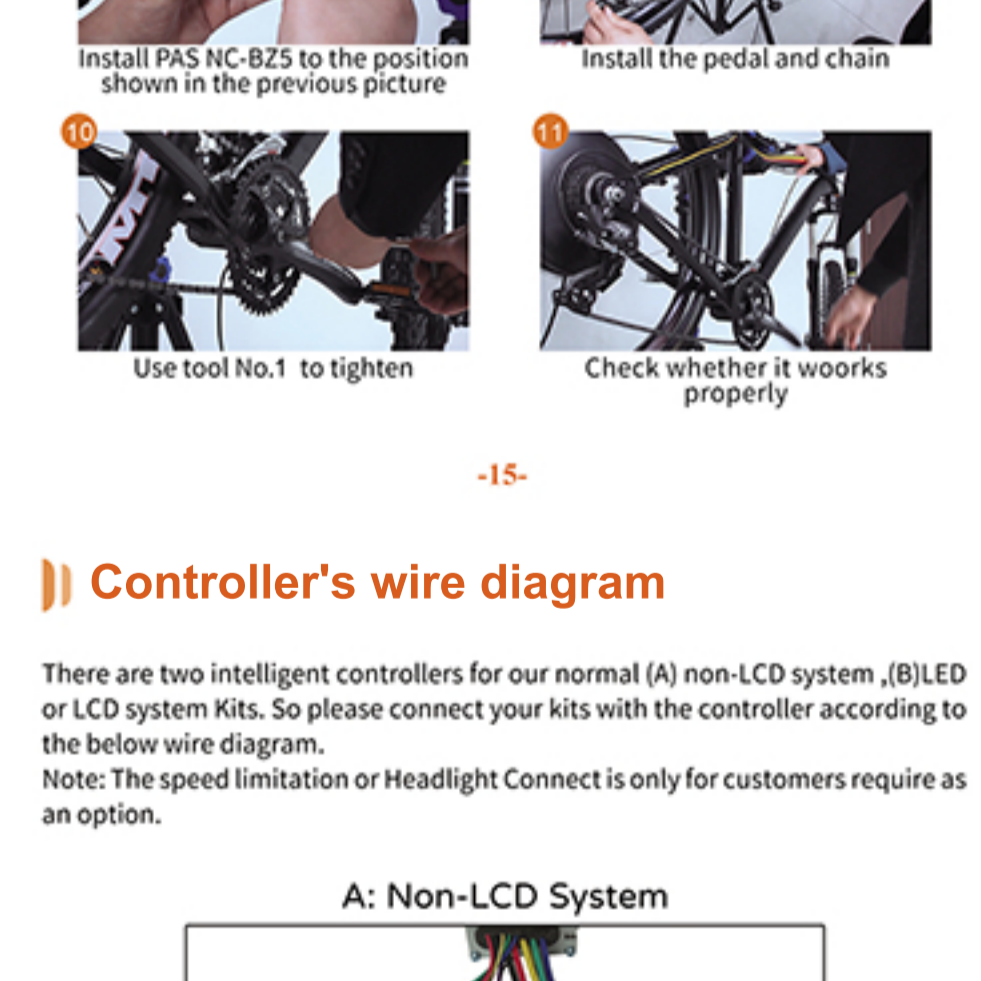
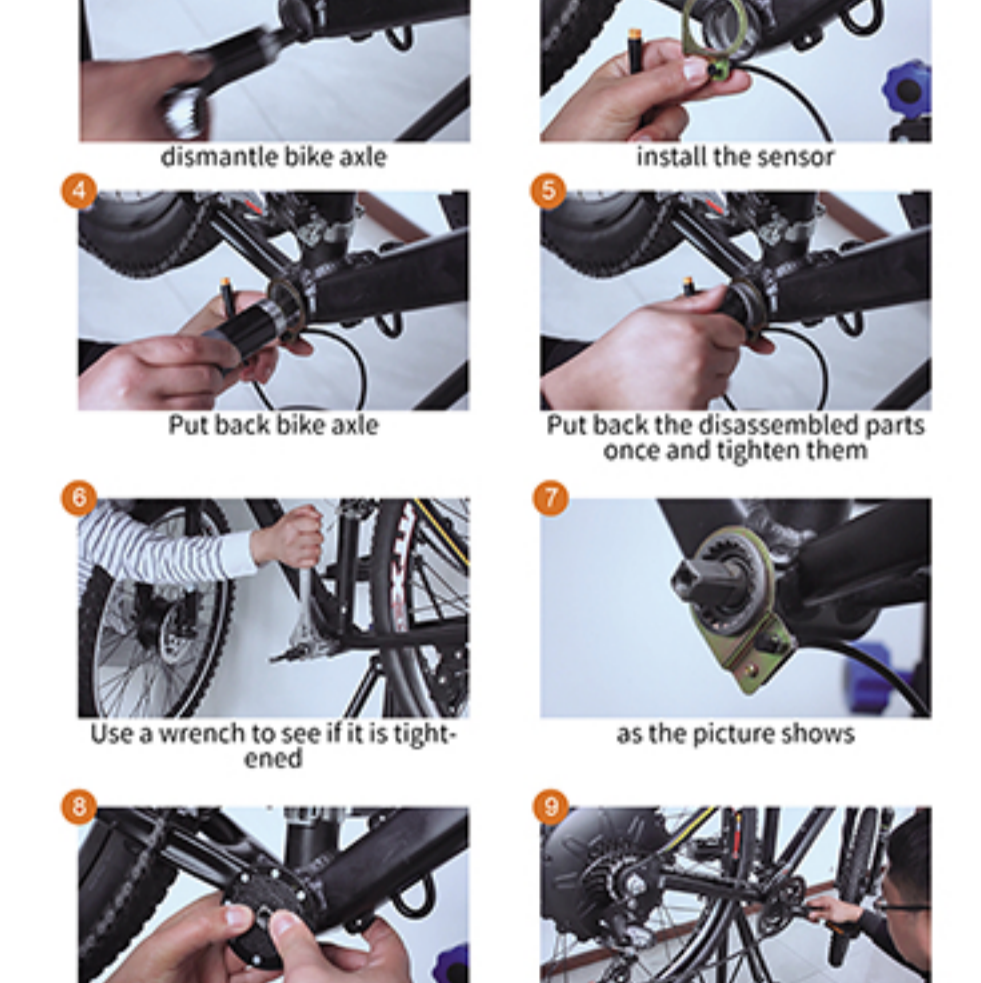
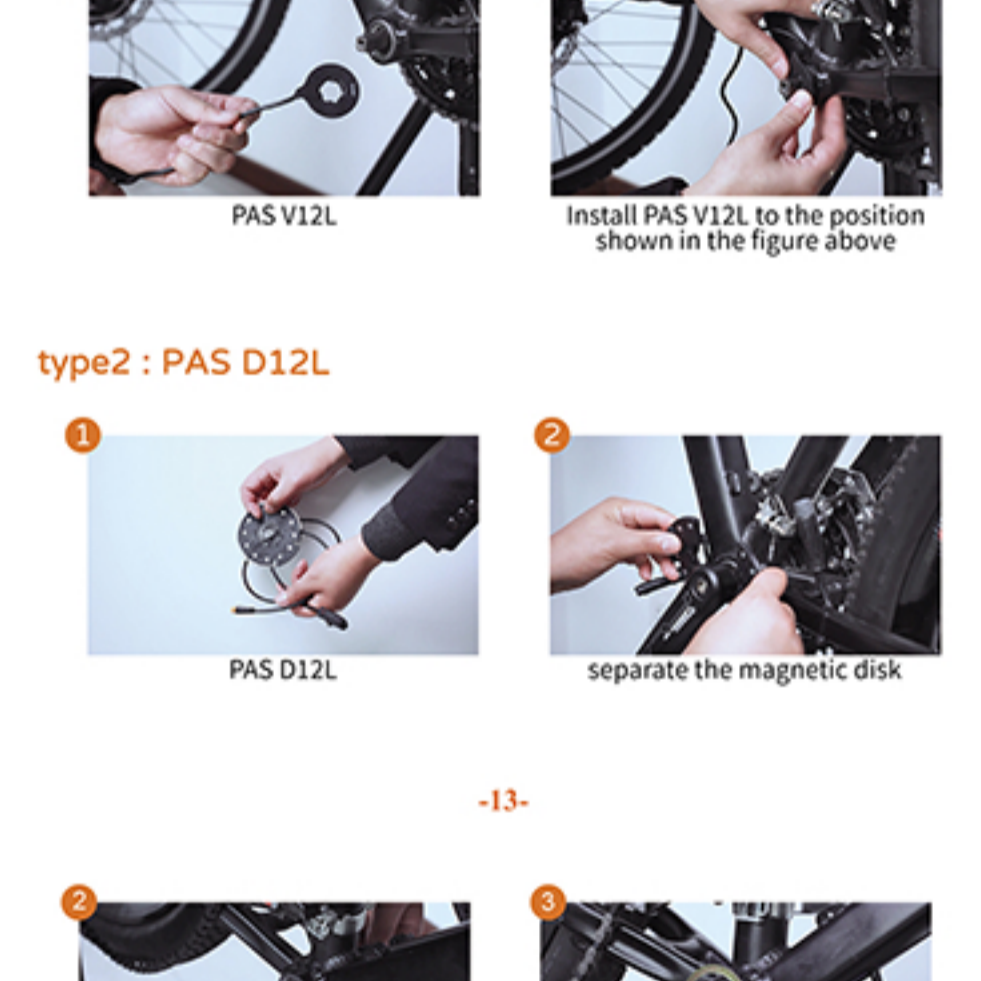
Disc brake installation

1. Take out parts one by one

2. Until as show



Controller installation



PAS and bottom bracket choose

PAS types for chose: BZ5, N12, V12L, D12L, 10CR

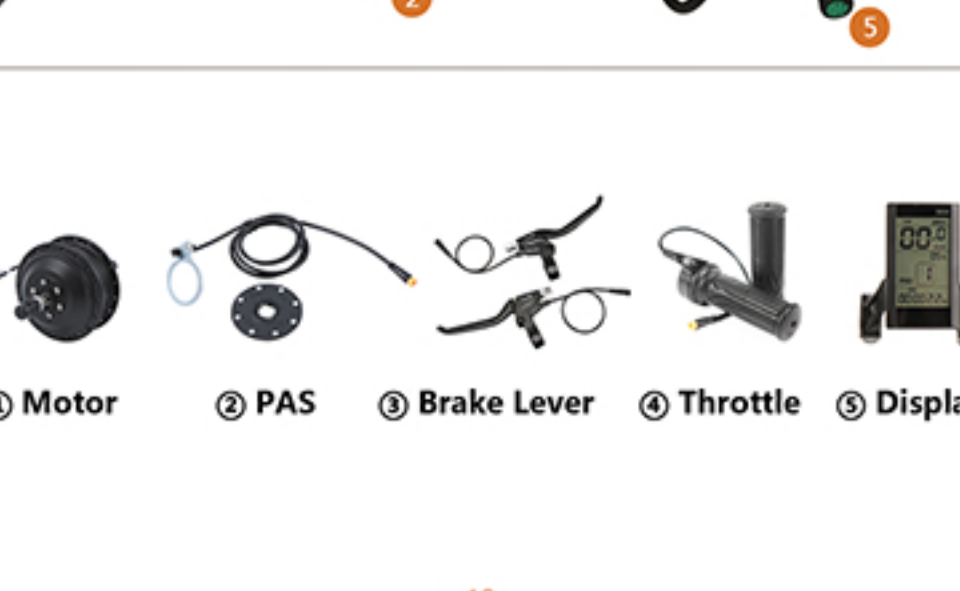
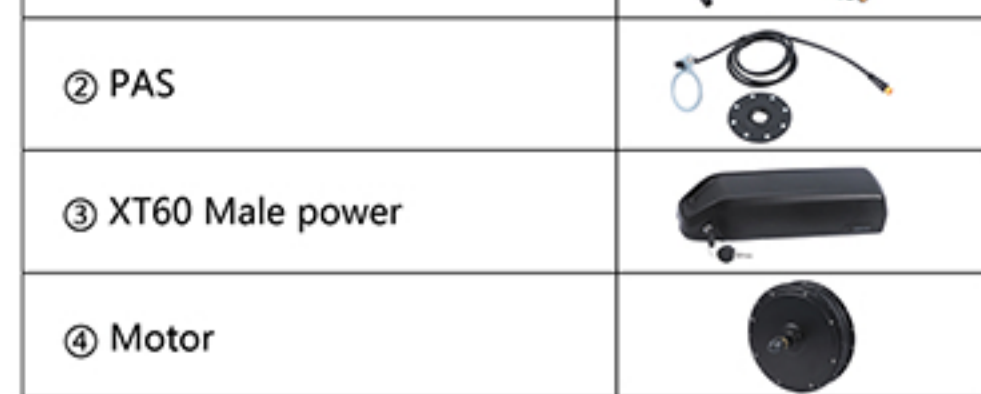
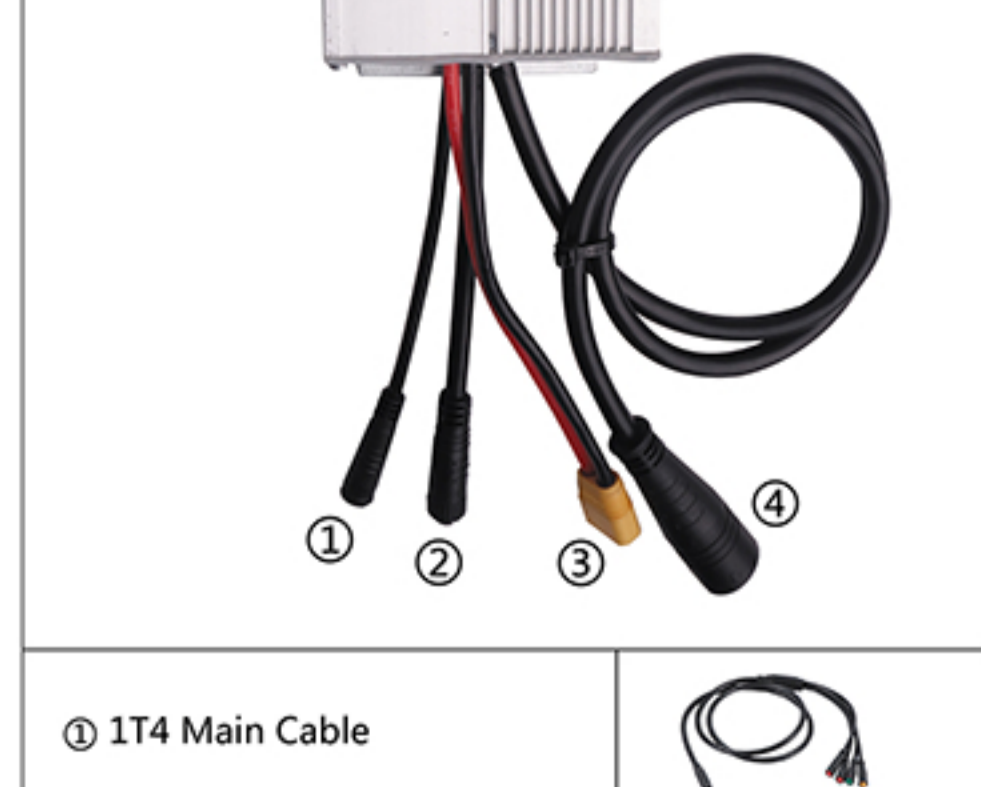
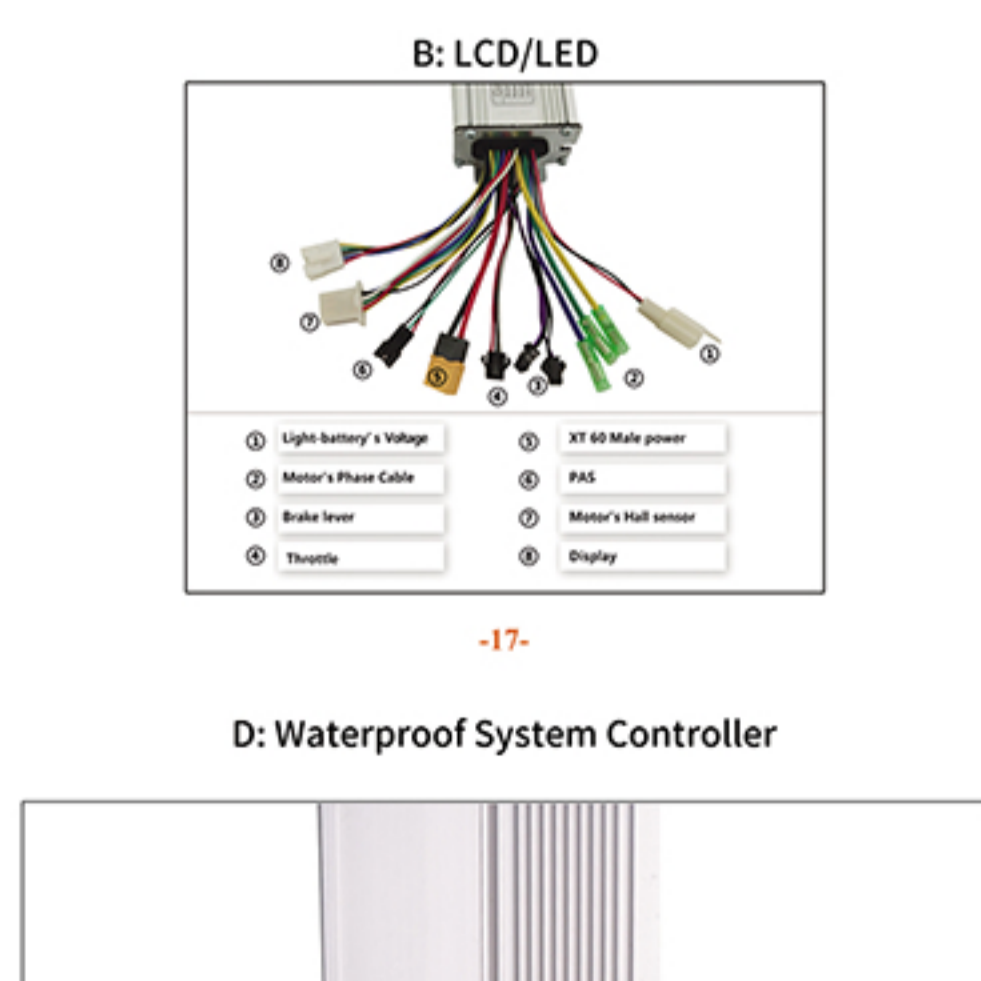
Before installing the PAS, please choose the PAS type according to your bicycle bottom bracket type first. There are some different bottom brackets in past years. As our experience, we found three types bottom brackets will be fit to our PAS.

Cartridge style Bottom Bracket There are two Versions, V1 and V2

Hollowtech bottom bracket

Please check the below	BZ5	N12	V12L	D12L	10CR
V1 Cartridge Bottom Bracket	OK	OK	NO	OK	NO
V2 Cartridge Bottom Bracket	OK	OK	OK	OK	NO
Hollowtech Bottom Bracket	NO	NO	NO	NO	OK

Controller's wire diagram



Finishing the fight

Checklist: (Turn off the battery)

- Wheel is secured in place. Tighten the nuts enough.
- The motor's cable is not against the disk, screws or nuts when spinning.
- Wheel has no loose parts.
- All components on the handlebar have been secured tightly.
- You are comfortable with the throttle, brakes, etc.
- The handlebar is able to rotate freely.
- The mechanical brakes work properly.

Maintenance

We recommend to have the spoke tension of the rear wheel and the torque of all screws checked by a qualified dealer after the first 200km (125 miles). In order to ensure extended use of the propulsion system, all plug-in contacts of the system should be checked every two to three months and cleaned with a soft and dry brush, if necessary. It must be ensured that no dirt or humidity penetrates the battery docking station when the battery is removed.

Clean

CAUTION: Never use a high pressure washer or a garden hose to clean the propulsion system. The force of a water jet could damage the electrical components of the propulsion system.

We recommend a soft sponge or a soft brush to clean the bicycle. Use a moist rag to clean the battery docking station. Always use very little water, and keep water away from the electrical contacts. Check the plug-in connections for moisture after cleaning and let these dry, if necessary, before using the bicycle.

NOTICE

Water damage to the battery/improper caring for the battery. The battery warranty does not include damage from power surges, use of improper charger, improper maintenance or other such misuse, or normal wear, our battery packs are water resistant and fine in the rain but should NEVER be submerged in liquid.

Batteries need to be stored fully charged and kept in a cool dry environment. They should be charged immediately after every use and never stored for long periods of time empty of without maintenance charging. Limited warranty does not cover or apply to the following: Normal wear and tear: any damage, failure and/or loss caused by accident, misuse, neglect, abuse and/or failure to follow instructions or warning as stated on the manual.